

DAY BY DAY ON RAPA NUI

A Sample of Five Day
Itinerary on Easter
Island, Chile.



Day 1

IORANA! WELCOME to Rapa Nui. This is the time to disconnect and enter this mystical land. You are located at **2,300 miles from the continent**, surrounded by the intense blue sea and standing among the colossal stone statues, **the moai**.

Easter Island is a place that has appealed to explorers of all times. Our guides will welcome you and introduce the explorations that will embark you on **the story of this land and its people**, the Rapanui.

Take a first walk around the lodge an opportunity to get a feel of the island and contemplate the **privileged view of the Pacific Ocean**. Head back to the lodge and have lunch in our terrace or dining room, and maybe finish the afternoon relaxing in our hot tub.

Day 2

WALKING ON RAPA NUI with your guide means talking and **sharing first-hand** the stories handed down from their ancestors.

Our route today goes up to the rim of the **Rano Kau crater**, the largest on the Island and entry point to Orongo, the ancient ceremonial village where the **Birdman competition** took place.

Walking along the edge of the **Rano Kau volcano crater** and seeing the vast ocean or contemplating the origin of the Rano Raraku rock figures and the moai quarry, you delve deep in Easter Island's oral tradition.

In anticipation of your next day, take a good look at the **motu**, the islets that rise up in the middle of the sea, with excellent conditions for **snorkeling**. Its waters are so clear that visibility can reach 197 feet.



Day 3

TODAY, DON'T FORGET your swimsuit. We will take a boat to the **motus**, where we can snorkel and appreciate the island **cliffs and caves** from a new perspective.

For those travelers holding diving certificates, we will discover **Easter Island's underwater world**. However, if you don't hold one, Explora offers an exploration to learn the basics, at an extra cost.

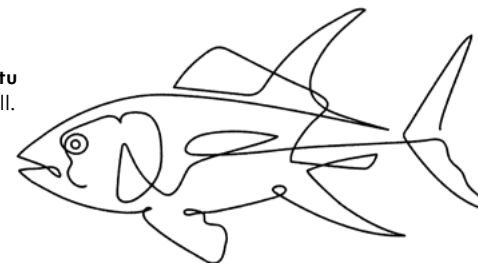
Unlike the bigger motus where the Birdman competition was held, **Motu o Pope** is no bigger than a meter tall. Located on the seashore, it forms a **perfect pool** where you can float and let your mind wander.

Day 4

WE BEGIN HIKING at the foothill of the **Terevaka Volcano** to reach the highest spot in the island. Peer out over the **immensity of the ocean** helps you understand why Easter Island is called the **navel of the world**.

We descend towards **Ahu Akivi with the 7 moai** as a backdrop, we gather for an outdoor **Tunu Ahi lunch**, the traditional way of preparing fish. **Volcanic rocks** are placed over the fire, with gentle heat rising from within. The cooking method is slow, but it couldn't be any other way next to the Pacific Ocean, **where the waves and tides set the pace**.

Travelers often get together in front of Ahu Tahai, in Hanga Roa, the island's biggest town to watch the sun set exactly behind the moai.



Day 5



AHU TONGARIKI

ON YOUR FINAL DAY, if you wish to do so, you can explore some of the most impressive **Ahu of the island on bike**. We ride from the lodge towards Ahu Tongariki, the best-rebuilt platform with 15 intact moai.

The Ahu are sacred sites. They appear like a stone platform with a moai on top, but each is unique, reflecting the importance of protecting **the memory of their ancestors**.

We continue along the coastline visiting several **archaeological sites up to Anakena**. Don't forget your swimsuit to enjoy the beach.

Make the most of this last night with us, take in all of the Rapa Nui experience and the unique encounters with its people. We hope you somehow **feel part of the Rapa Nui world**. See you again soon.

TUNA FISH

Everything is included

Since we believe that it is important to leave all daily concerns behind, our lodges are all inclusive: explorations, food, beverage, and transport.